

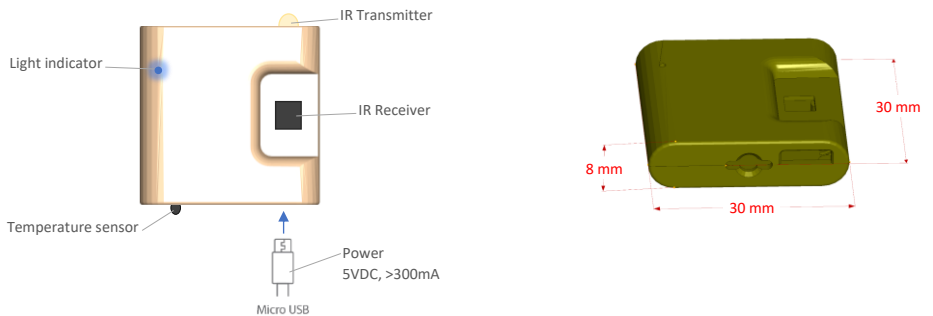
# Airconet

Plug & Play wifi Aircon Control  
via Mobile Application



Ver. 1.05

# Specification



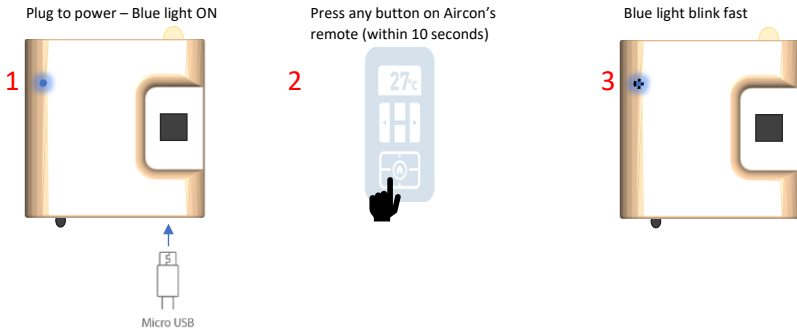
- Compatible with most iOS and Android smart phones
- Control AirCon from anywhere in the world (via Wifi or 3G/4G)
- Control Cold / Hot / Auto / Fan / Dry mode, Set Point and Fan 1, 2, 3, Auto
- 2-way communication (status feedback and sync with aircon's remote control)
- Automatic aircon brand selection via aircon's remote control
- Compatible with major aircon brand with remote control (other aircon brand has to be pre-implemented in our factory)
- Plug and Play – no need installation
- Measure Room temperature via built-in temperature sensor NTC
- No need additional controller (standalone product)
- Miniature size of 3\*3\*0.8cm (almost invisible on the wall)
- Turn ON the air condition to its last status in memory
- Set Point Temperature Range: 16 ~ 32°C
- Room Temperature range: 0 ~ 60°C
- Power: 5VDC, Max. 300mA
- IR distance: Max. 6 meters at line of sight
- Wireless wifi frequency: 2.4GHz ISM free frequency range
- Wifi Communication distance: maximum 30 meters (at line of sight)
- Enclosure: ABS plastic casing. White color or custom (MOQ)
- Indoor use only
- CE, EMC, FCC, IC, LVD standard

# Airconet Quick Setup Manual

## 1. Create an account on mobile phone

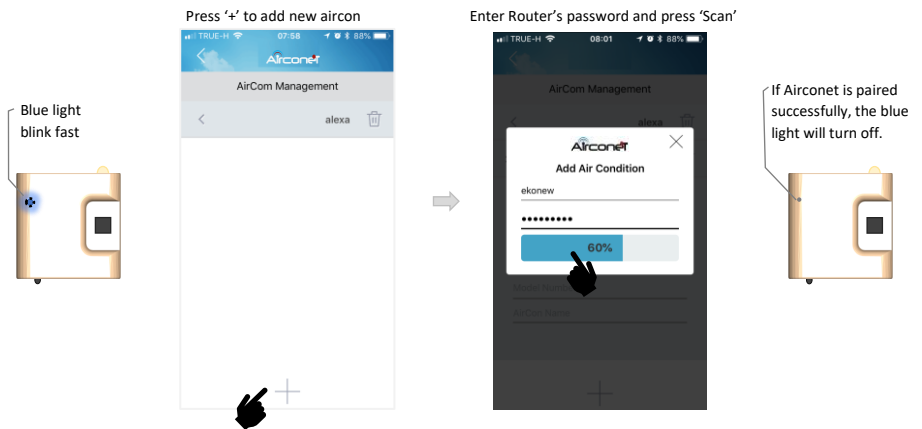
## 2. Pair Airconet to Air Condition

Plug Airconet to power. Within 10 seconds, while blue light is on, press any button on the aircon's remote control

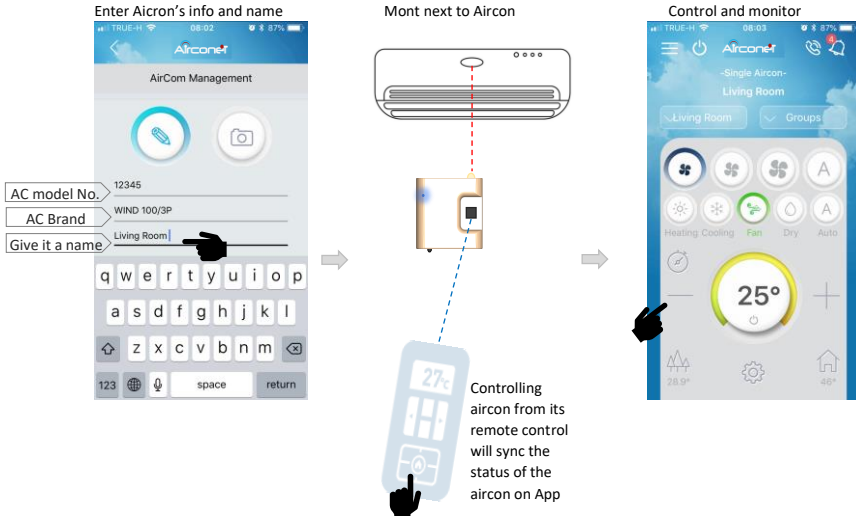


## 3. Pair Airconet to Router

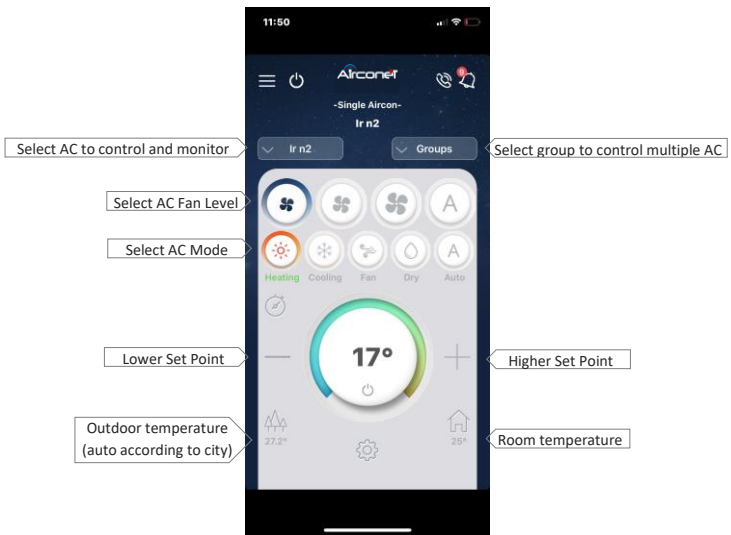
Connect mobile phone to router and follow these notes:



#### 4. Name it, mount it, control it



#### 5. App (iOS and Android)

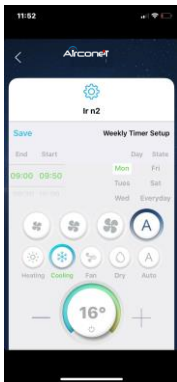


## 6. Functions

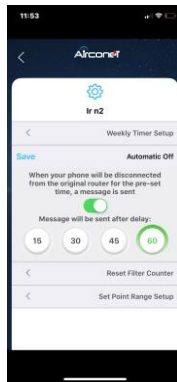
### Master On/Off



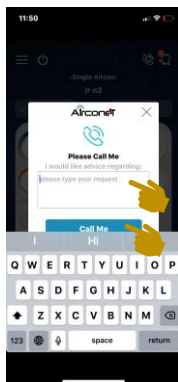
### Weekly Timer



### Auto Off (away mode)



### Call me – send message to Service Centre



### Show notification list



A 'clean filter' notification is sent after anyone of the aircon has been working for accumulative 250 hours