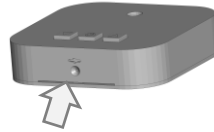
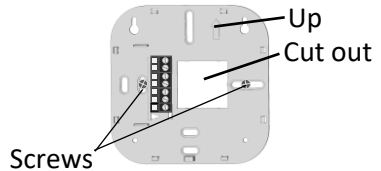


## 110-220VAC Wired Heating Thermostat installation guide

1. Remove the back panel using flat object



2. Mount thermostat's back cover at upright position on the wall.  
Cut cover and insert heater wires



3. Disconnect main power breaker and wire thermostat as show bellow
4. Attach the thermostat to the back panel by pushing it onto the wall.  
Ensure it is tightly mounted all around (confirm there is no gap)
5. Connect power supplies back

Press the thermostat's power button to ensure the thermostat is connected properly. The display should show the room temperature

### Control Logic

Heat Mode = heating

Fan Mode = radiator work 1 minute every 5 minutes

Fan mode = only heater work (radiator is off). Power off if Set=Room

Auto Mode = Heat mode

Cold Mode = void

Fan Auto = Heater power off with radiator

Fan 1 = Heater power off 1 minute after radiator

Fan 2 = Heater power off 3 minutes after radiator

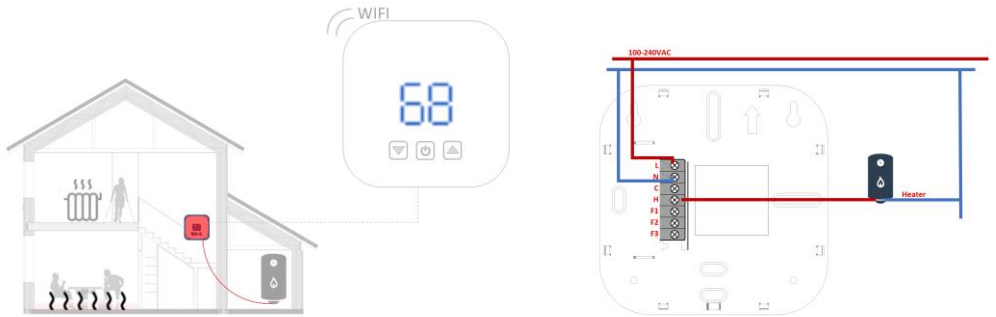
Fan 3 = Heater always on while thermostat is working (even if radiator is off)

Auxiliary Heat = activated if 'Set Point' is  $\geq 3$  from 'Room temperature'

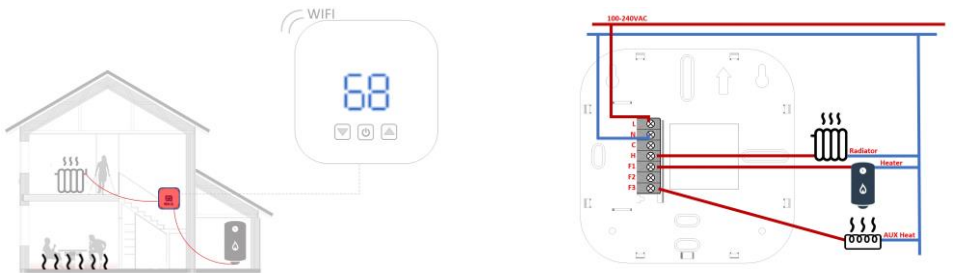
There is a **3 minutes delay** before the relays are triggered

## Wiring options

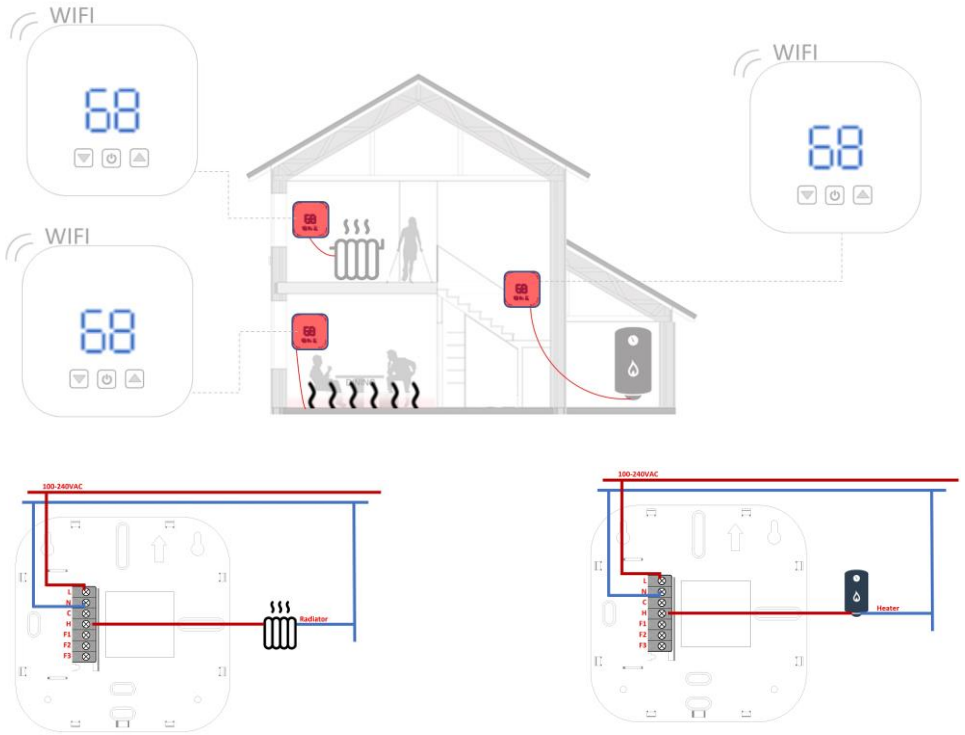
### Option 1 – heater only



### Option 2 – heater and radiator (with automatic valve)



### Option 3 – heater and multi radiators (with automatic valve)

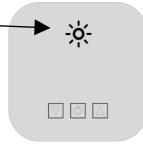


#### Notes:

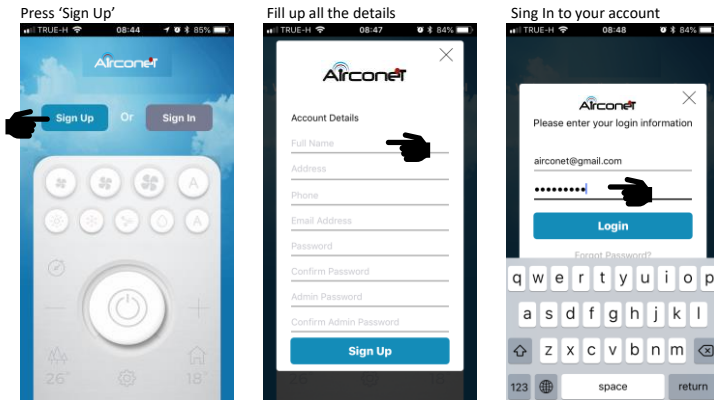
- Auxiliary Heat is activated if 'Set Point' is  $\geq 3$  from 'Room temperature'
- Relays rated at 1 Amp for control only. To control high loads please use external contactor

## App Setup

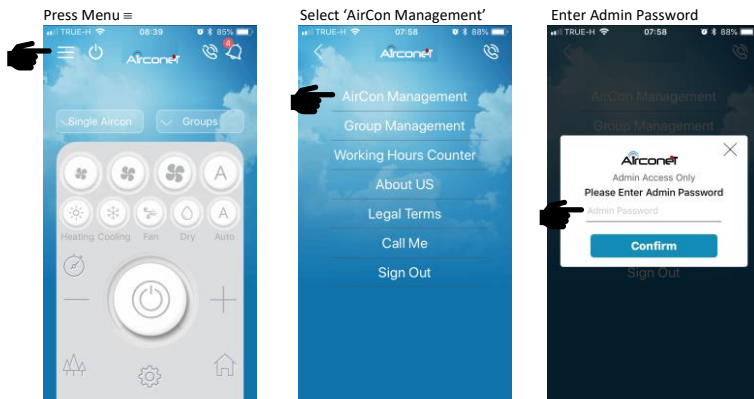
1. New thermostats have red light flashing indicating the thermostat is not connected to the network



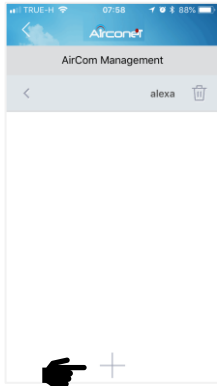
2. Download EKON App to iOS or Android phone from App Store
3. Create an account:



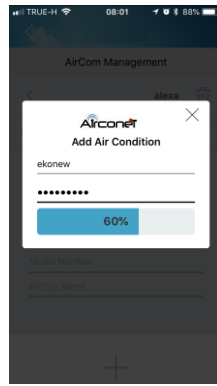
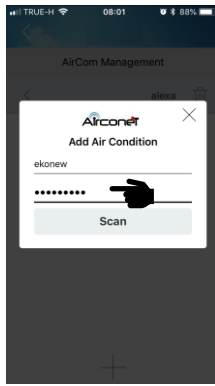
4. Connect thermostat to network as follows:



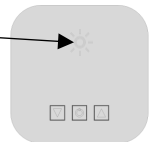
Press '+' to add new thermostat



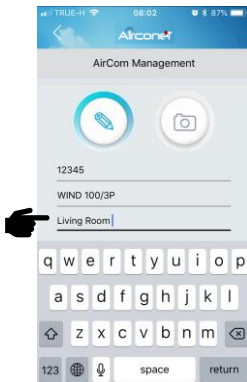
Enter Router's password and press 'Scan'. Wait few seconds



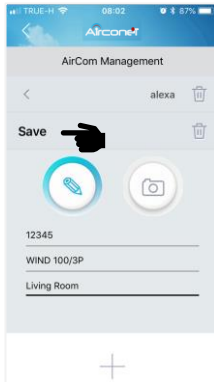
If the thermostat was added successfully, the red light will go off. Otherwise try again ensuring there is wifi reception in the thermostat's area



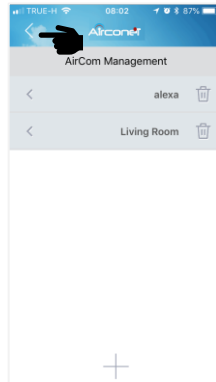
Fill up Thermostat's details



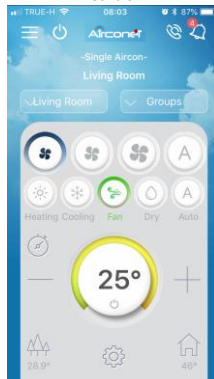
Press 'Save'



Thermostat added. Go back



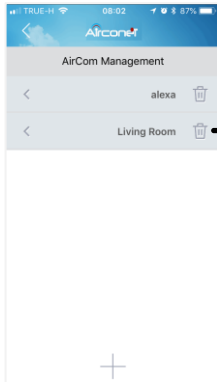
Control



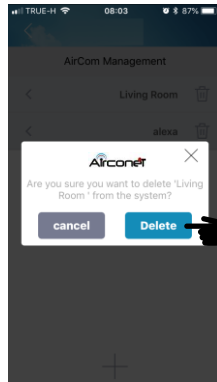
## 5. Delete Thermostat from App and network (to replace router)

Enter Setup mode (see above)

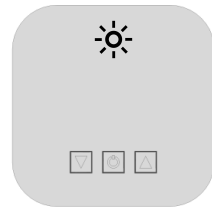
Press BIN next to name



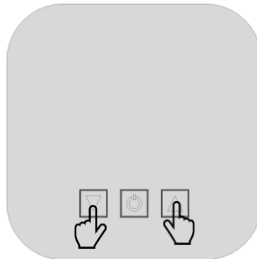
Select 'Delete'



The red light will flash again



If the network red light on the thermostat does not flash after delete, need to reset the wifi from the thermostat itself by holding the ▼▲ buttons for 10 seconds until all 3 Lights flash.



Repeat above steps to connect the thermostat to a new router